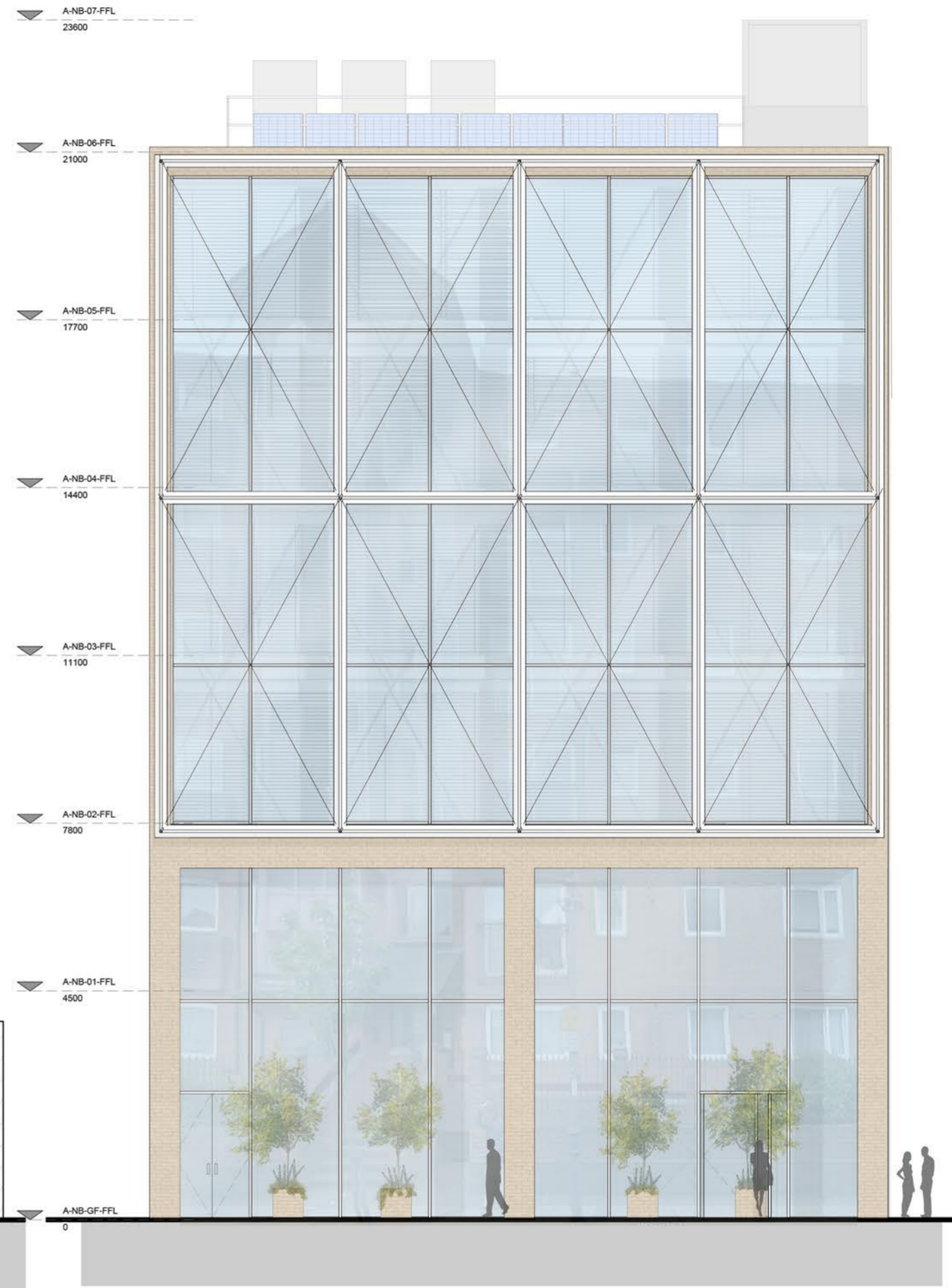
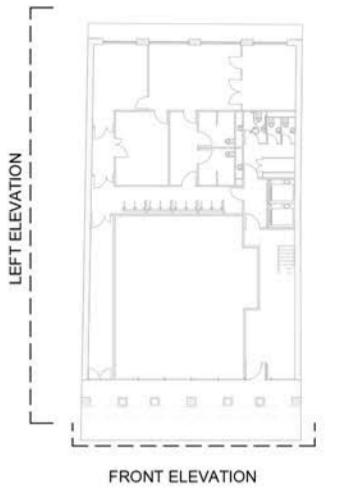


LEFT SIDE ELEVATION



FRONT ELEVATION



P6 FIXED PLANTERS ADDED 25-02-19
 P5 BASEMENT REMOVED, REVISED OF LAYOUT PLAN, ADJUSTABLE NON-RETRACTABLE LOUVERES ADDED ON FRONT ELEVATION FROM ONE TO SIX FLOOR 05-02-19
 P4 PLANS, REVISED FRONT ELEVATION 16-07-18
 P3 ISSUED FOR PLANNING APPLICATION 22-05-18
 P2 ISSUED FOR COMMENTS 08-05-18
 P1 ISSUED FOR COMMENTS 30-04-18

Author	Revised	Date
F. Ca.	M.F.	Z.G.
58516	25/01/17	As indicated @ A2

McBains
 McBains Ltd
 5th FL, 25 Finsbury Square, London EC2A 1ES
 +44 (0)20 7786 7900
 mcBains.co.uk

Client
 WOODCOCK HOLDINGS

Project
 188-194 The Broadway, Wimbledon

Drawing Title
 FRONT ELEVATION
 LEFT SIDE ELEVATION



ARCHITECTURE
 BROAD - MCB - XX - ZZ - DR - A - 0130 53 - P6

Bill Transmittal Disclosure
 McBains Ltd makes no express or implied warranties with respect to the character, function, or capabilities of the data (inclusive of 3rd party data incorporated within), or the suitability of the data for any particular purpose beyond those originally intended by McBains Ltd. please refer to our standard terms and conditions for further details.

This page is intentionally left blank